

NEW
MPC15



ElectroMech

Yale



Still using
conventional
Hand Pallet Truck?

**Switch to new
Lithium-ion
battery powered
pallet trucks from
ElectroMech Yale**



MPC15 / 1500kg

**1 unit of MPC15 \approx 4 HPTs
ROI in just 4 months***

Li-ion
Opportunity Charging
6-SECOND BATTERY CHANGE

Productivity >> Cost of ownership delivered >> Reliable

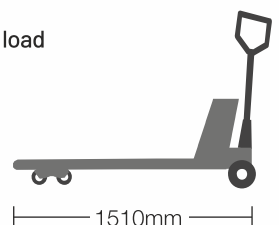
Compact and Lightweight Design

- Powered travelling, lifting and lowering
- Efficiency is tripled over a hand pallet truck
- 6-second battery exchange;
suitable for continuous operations
- Intelligent Remote Control key option
- Recharge alert
- Large battery capacity with fast charger
- Emergency reverse 'belly' button
- Ergonomic, multi-function handle
with LCD display to maximise uptime
- Easy and simple to maintain
- Maintenance-free components;
brushless drive motor and Lithium-ion battery
- 60-second drive wheel replacement
- Durable steel frame and protective cover
- Performs well on gradients

Hand Pallet Truck VS. Powered Pallet Truck

Hand Pallet Truck (HPT)

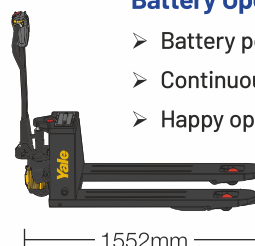
- Labourious pushing or pulling of load
- Reduces operator efficiency
- Lower productivity



120kg

Battery Operated Pallet Truck (BOPT)

- Battery powered and hence effortless
- Continuous performance throughout the shift
- Happy operator means higher productivity



*Based on continuous operation in an 8 hour shift under ideal working conditions.

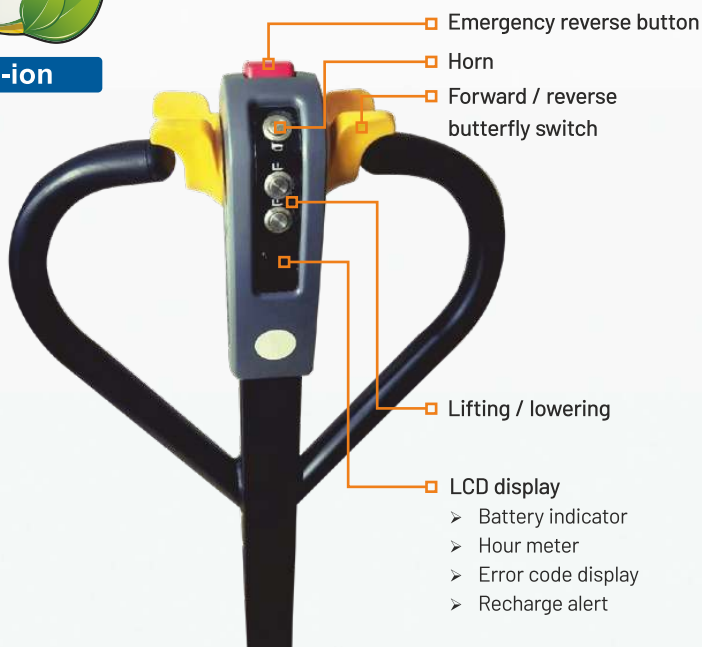
Lithium-ion Powered Pallet Truck - MPC15 / 1500kg

Specifications and Dimensions

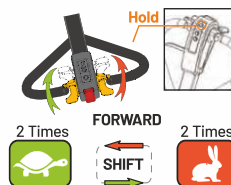
Model designation		MPC15	
Operator type		Pedestrian	
Rated capacity	kg	1500	
Load center	mm	600	
Overall fork width	mm	550 / 685	
Fork dimensions	mm	58 x 160 x 1150	58 x 160 x 1220
Wheelbase	mm	1197	1267
Overall length	mm	1552	1622
Turning radius	mm	1353	1426
Aisle width for pallets 1000 x 1200 crossways / 800 x 1200 lengthways	mm	1718 / 1687	
Lowered height - top of forks	mm	82	
Total lift	mm	115	
Height of tiller (min. / max.)	mm	820 / 1150	
Maximum gradeability (laden / unladen)	%	6% / 20%	
Travel speed (laden / unladen)	km/h	4.0 / 4.5	
Control type		DC	
Drive / lift motor	kW	0.75 / 0.5	
Lift speed - laden / unladen (lowering speed - laden / unladen)	m/s	0.018 / 0.023 (0.056 / 0.046)	
Travel brake type		Regenerative	
Service brake type		Electromagnetic	
Service weight (inc. battery)	kg	120	125
Axle loading laden front / rear (unladen front / rear)	kg	1134 / 486 (88 / 32)	
Drive wheel x (1)		Ø140 x 55 Poly	
Load wheel [single x (2) / dual x (4)]		Ø80 x 93 Poly / Ø80 x 70 Poly	
Battery type		Lithium	
Battery capacity	Ah	10 / 15	
Battery voltage	V	48	
Power consumption in accordance with VDI cycle	kWh/h	0.42	
Sound level at the drivers ear EN / DIN 12053	dB (A)	69	



Li-ion

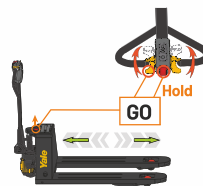


Operator Assist Features



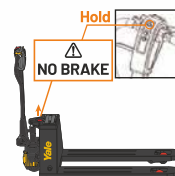
Hold down horn, X2 forward

Speed Setting
Convenient fast / slow pre-set speeds



Press and hold: reverse button + forward throttle, power on

Up-Right Drive
Maximise efficiency in tight spaces



Hold down horn, power on

Service Mode
Utilise brake release in emergencies



ElectroMech

Yale

For enquiries, contact:

ElectroMech Material Handling Systems (India) Pvt. Ltd.

Gat No. 316, At post Kasar Amboli, Tal. Mulshi, Dist. Pune 412 111 INDIA

Telefax : +91-20-6654 2222 | E-mail : yale@emech.in

www.emechyale.in