

UX
SERIES



ElectroMech



Internal Combustion Counterbalanced Forklift

GDP40-50UX / 4000 - 5000kg

UX Series

Internal Combustion Counterbalanced Forklift

GDP40-50UX / 4000 - 5000kg



Features

1 High Strength OHG

Overhead guard featuring high strength profiled steel sections to enhance operator protection.

2 Full Suspension Seat

Full suspension seat that offers excellent comfort, fitted with an operator's presence system as standard.

3 Low Step Height

Convenient step placing to suit a variety of driver heights to provide easy access to the truck at all times.

4 Wide View Mast

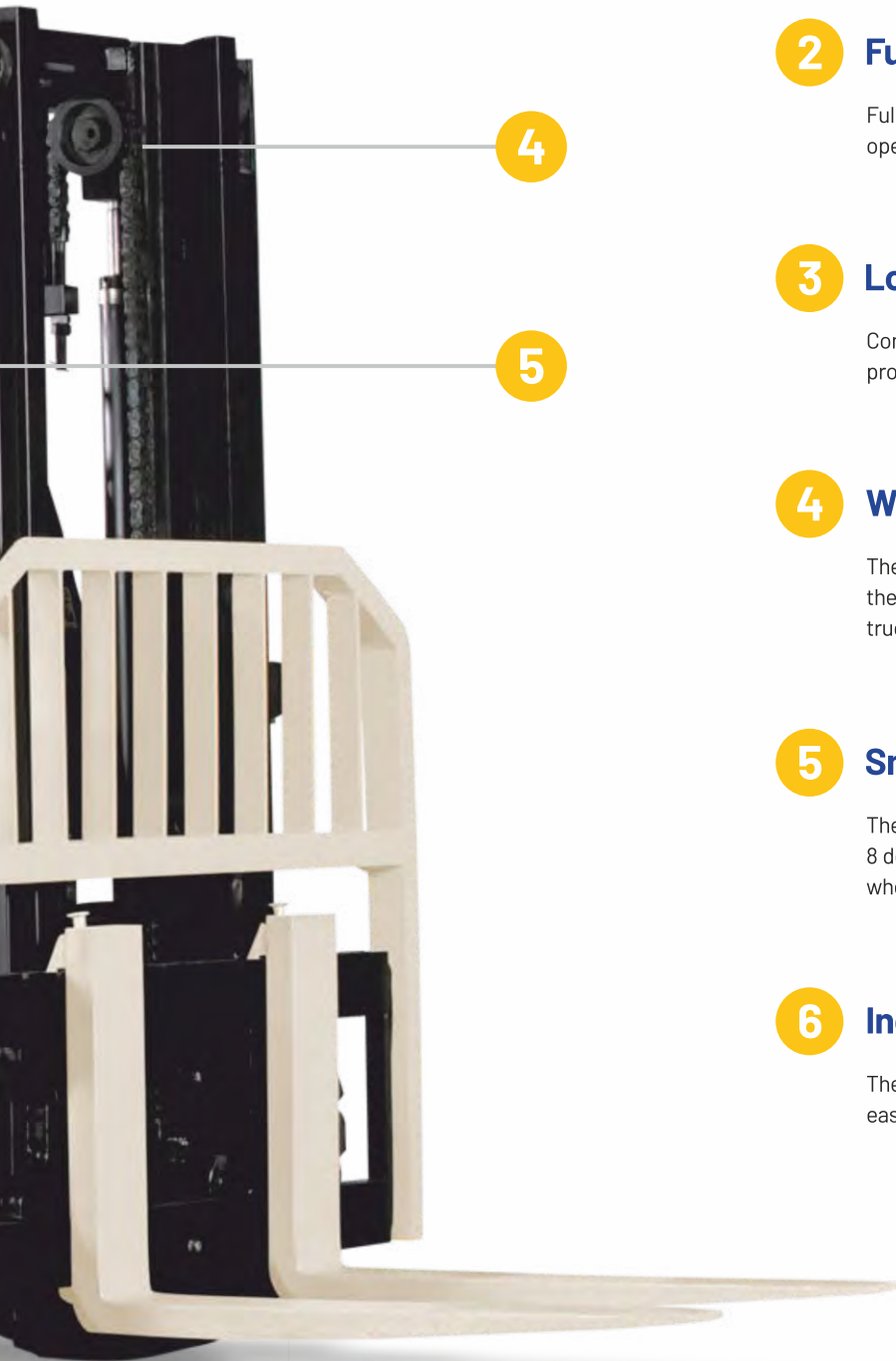
The wide view mast delivers excellent visibility of the load and the operators forward field of view optimising comfort and truck productivity.

5 Small Steering Wheel

The adjustable steering is convenient for the operator, providing 8 degrees of tilt adjustment. Allowing for good manoeuvrability when working in confined spaces.

6 Industrial Engine

The UX Mitsubishi Industrial engine provides good reliability and easy for sourcing of replacement parts.



Overview

GP40-50UX

The Yale® UX Series provides the ideal solution to meet your less frequent usage, without compromising on performance and durability.

The Range

The range consists of 4,000 - 5,000kg. IC counterbalance, pneumatic tyre forklift trucks, available in two different capacities (Lift and Load Centre):

- **4,000KG - GDP40UX**
- **4,500KG - GDP45UX**
- **5,000KG - GDP50UX**

Each model is available with diesel 2 speed forward /1 reverse powershift transmission, with front-end equipment options to suit varying applications.

Easy to Operate

The ergonomically designed operator's compartment, with a familiar automotive layout, means that drivers will be able to work comfortably. A range of standard features and options help the truck to be configured to the needs of the application.

Serviceability

Due to the simplicity of the components and specifications, servicing can be carried out quickly and easily.

Low Cost of Ownership

The use of high-quality, robust components, with efficient filtration and excellent cooling contributes to reliable operations and lower wear and tear. This, together with the fast availability of cost-effective replacement parts reduces maintenance requirements and cost.

Ergonomics

- Yale® UX 3.5" LCD display
- Spacious foot room
- Dual suspension system (transmission & operator)
- Hand parking brake lever with button significantly reduces fatigue in operation
- Small diameter steering wheel with adjustable tilt steering column

Safety and Stability

- Wide view mast
- High strength overhead guard
- Muffler and engine protection system
- Low centre of gravity

Easy Maintenance

- Large access area for service and repairs
- Simple components
- Computer-based diagnostics not required

Reliability and Exchangeability

- One piece welded overhead guard
- Exchangeable components across models

Environmental Protection

- Noise isolation
- Environmentally-aware design

Features

Engineered for drivers with Comfort, Safety and Ergonomics



Yale® Display with 3.5" LCD

- The Yale® UX Series Forklift adopts a 3.5" LCD display, providing convenient viewing of the display data when driving and operating



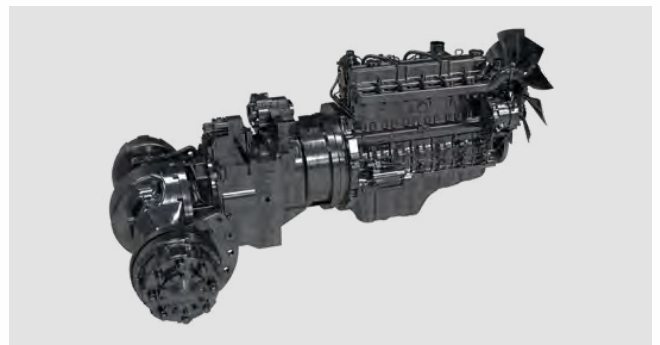
Hand Parking Brake

- Low effort to operate park brake lever
- Hand parking brake lever with button reduces operator fatigue



Spacious Footwell

- Spacious foot room design provides comfort, convenience
- Control pedals provide extra foot space which reduces operator fatigue and increases operator comfort



Transmission and Drive Axle

- Heavy duty and robust Powershift transmission with two forward gears and one reverse
- Durable and long life Drive Axle

Features



Small Diameter Steering Wheel with Adjustable Steer Column

- The 300mm diameter steering wheel is easy to manipulate, responsive, with optimum maneuverability when working in a confined spaces
- The ideally positioned steering wheel allows 8 degrees of tilt adjustment, to suit a variety of different operators



High-Strength Overhead Guard

- Profiled steel overhead guard
- High strength roof enhances reliability and operator protection



Good Through-Mast Visibility

- The wide view mast delivers excellent visibility of the load and operator's forward field of view. Optimising comfort, safety and productivity
- Mast composite roller structure



Large Access Area for Service and Repairs

- Large access space to engine compartment makes service and repairs easy

Servicing



Suspension Seat

- Full suspension seat offers excellent comfort
- Operator presence system as standard



Exchangeable Components

- Engine cover, instrument panel, display and most other components are exchangeable with other capacities in the same range
- Front fenders adaptable to single or dual wheel configuration

Improved Lift Speed

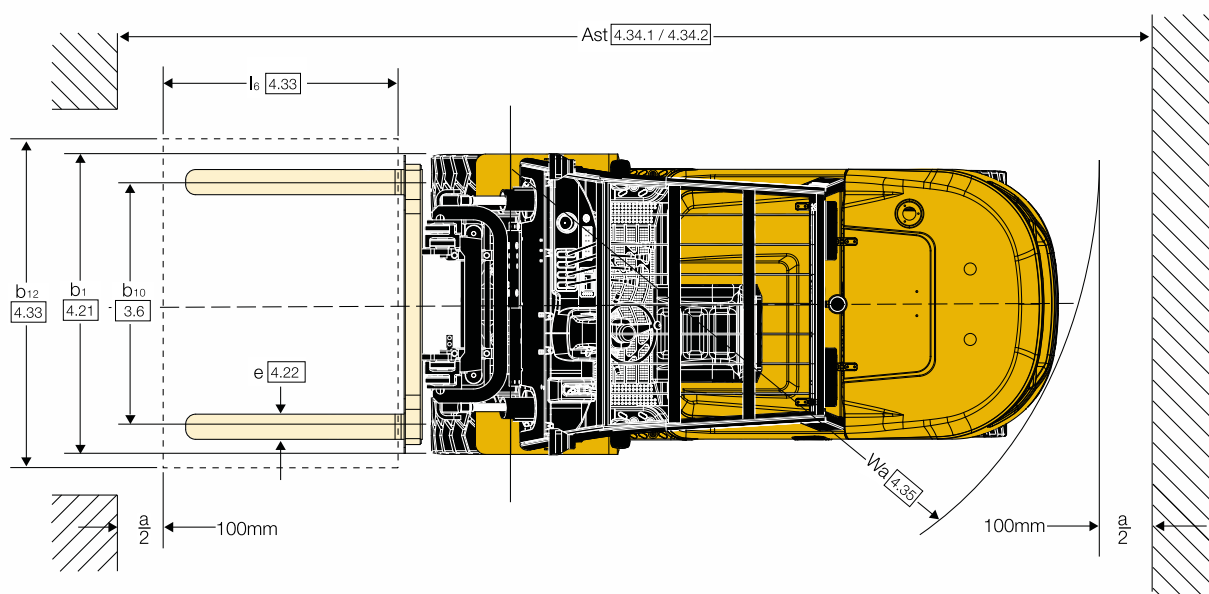
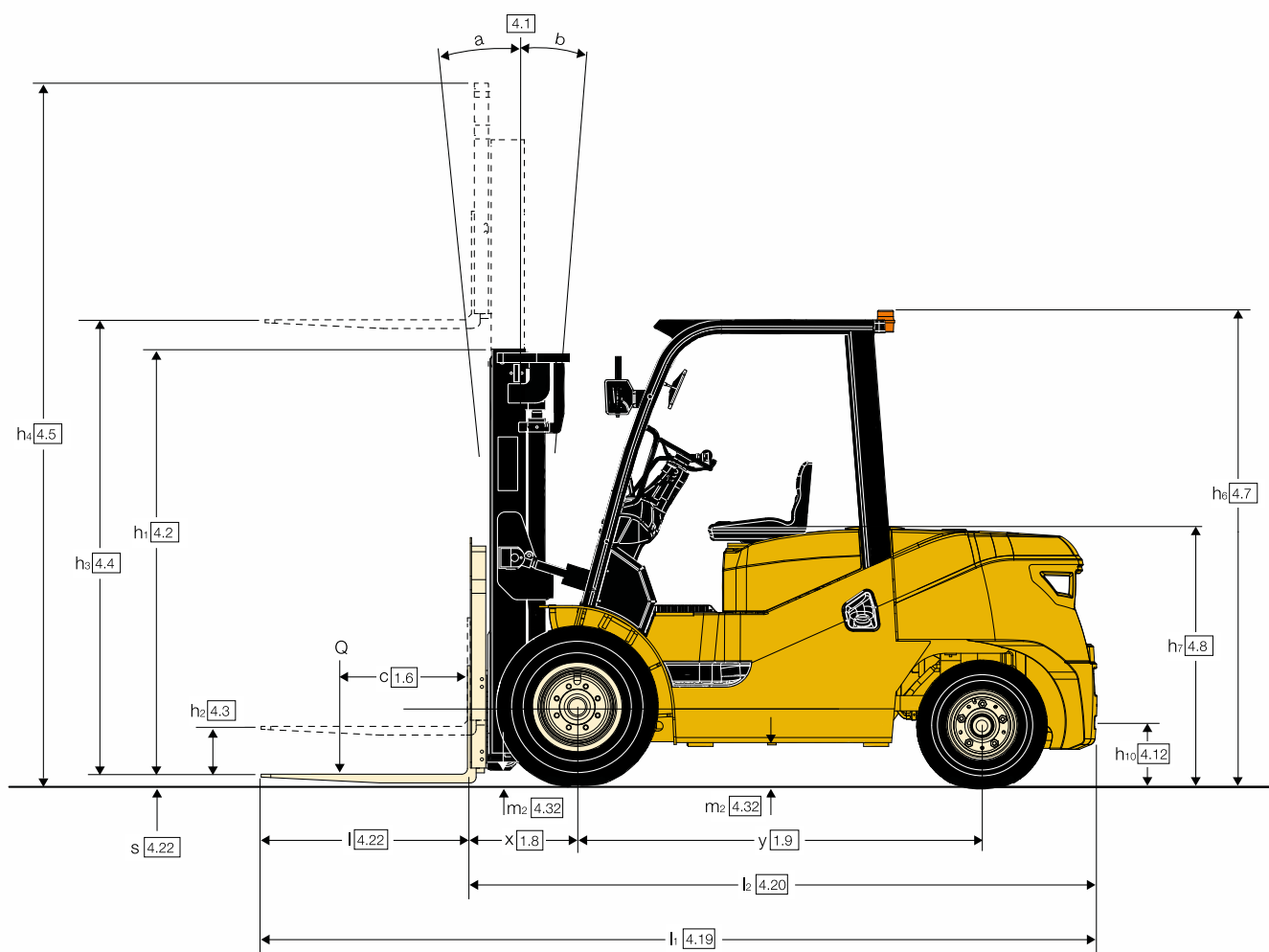
- Enabling high productivity

Options

Yale® UX Series trucks feature a comprehensive range of standard equipment, with options to suit the needs of your application, including:

- 4th Function hydraulics (+clamping function)
- Pneumatic-shaped solid (tyres)
- Various fork lengths
- Integral sideshift
- Rear, LED work light
- Strobe light
- Backup alarm
- High air intake with pre-cleaner
- Tilt cylinder boots
- Various mast heights
- Polycarbonate top screen
- Front window with wiper
- Alternate tilt angles

Truck Dimensions



Mast and Capacity Information

GDP40-50UX Mast details and capacity ratings (kg) – Superelastic tyres

Mast Type	Mast Specification	Maximum Fork Lift	Overall Extended Height						Free Lift				Load Distance		Mast Tilt		Capacity 500mm Load Centre Front Single Tyre			Mast Weight	
			Lowered Height		Without Load Backrest		With Load Backrest		Without Load Backrest		With Load Backrest										
			4.0-4.5t	5.0t	4.0-4.5t	5.0t	4.0-4.5t	5.0t	4.0-4.5t	5.0t	4.0-4.5t	5.0t									
			mm	mm	mm	mm	mm	mm	mm	mm	mm	mm	mm	mm	F (°)	B (°)	4.0t kg	4.5t kg	5.0t kg	4.0-4.5t kg	5.0t kg
2-STAGE LIMITED FREE LIFT	M300	3000	2250	2250	3850	3850	4260	4260	150	155	150	155	575	580	6	12	4000	4500	5000	1310	1325
	M330	3300	2400	2400	4150	4150	4560	4560	150	155	150	155	575	580	6	12	4000	4500	5000	1335	1350
	M350	3500	2500	2500	4350	4350	4760	4760	150	155	150	155	575	580	6	12	4000	4500	5000	1360	1375
	M370	3700	2600	2600	4600	4600	5010	5010	150	155	150	155	575	580	6	12	4000	4500	5000	1370	1385
	M400	4000	2800	2800	4850	4850	5260	5260	150	155	150	155	575	580	6	12	3800	4250	4750	1420	1435
	M450	4500	3050	3050	5350	5350	5760	5760	150	155	150	155	575	580	6	6	3400	3800	4250	1490	1505
	M500	5000	3300	3300	5850	5850	6260	6260	150	155	150	155	575	580	6	6	2800	3150	3500	1540	1555
	M550	5500	3600	3600	6350	6350	6760	6760	150	155	150	155	575	580	3	6	2250	2800	2850	1630	1645
M600	6000	3850	3850	6850	6850	7260	7260	150	155	150	155	575	580	3	6	1950	2500	2550	1680	1695	
2-STAGE FULL FREE LIFT	M300	3000	2250	2250	3800	3800	4210	4210	1425	1425	1030	1425	585	590	6	12	4000	4500	5000	1420	1435
	M330	3300	2400	2400	4100	4100	4510	4510	1575	1575	1180	1575	585	590	6	12	3960	4460	4960	1430	1465
	M350	3500	2500	2500	4300	4300	4710	4710	1675	1675	1280	1675	585	590	6	12	3920	4420	4920	1470	1485
	M375	3750	2625	2625	4550	4550	4960	4960	1800	1800	1405	1800	585	590	6	12	3850	4350	4850	1500	1515
	M400	4000	2800	2800	4800	4800	5210	5210	1975	1975	1580	1975	585	590	6	12	3750	4250	4750	1540	1555
3-STAGE FULL FREE LIFT	TFM400	4000	2110	2110	4860	4860	5260	5260	1270	1270	885	1270	630	635	6	6	3600	4000	4500	1760	1775
	TFM435	4350	2235	2235	5210	5210	5610	5610	1395	1395	1010	1395	630	635	6	6	3400	3800	4250	1800	1815
	TFM450	4500	2285	2285	5360	5360	5760	5760	1445	1445	1060	1445	630	635	6	6	3200	3600	4000	1820	1835
	TFM480	4800	2385	2385	5660	5660	6060	6060	1545	1545	1160	1545	630	635	6	6	3000	3350	3750	1860	1875
	TFM500	5000	2485	2485	5860	5860	6260	6260	1645	1645	1260	1645	630	635	6	6	2800	3150	3500	1900	1915
	TFM540	5400	2610	2610	6260	6260	6660	6660	1770	1770	1380	1770	630	635	3	6	2250	2550	2850	1940	1955
	TFM600	6000	2850	2850	6860	6860	7260	7260	2010	2010	1625	2010	630	635	3	6	1700	1950	2200	2090	2105
	TFM650	6500	3050	3050	7360	7360	7760	7760	2210	2210	1825	2210	630	635	3	6	1200	1500	1700	2240	2255

Capacities are with standard carriage.

Mitsubishi 5.0L, Diesel	
6 Cylinder	Overhead valve
Displacement	4,996 litre
Torque	250Nm @ 1,600rpm
Power	52kW @ 2,300rpm
Air filtration	Two stage, dry type
IDI fuel injection system	

GDP40UX, GDP45UX, GDP50UX Diesel Forklift Specifications

Distinguishing mark	1.1	Manufacturer		Yale®	Yale ®	Yale ®
	1.2	Model designation		GDP40UX	GDP45UX	GDP50UX
	1.3	Power: battery, diesel, LPG, electric mains		Diesel	Diesel	Diesel
	1.4	Operation: manual, pedestrian, stand, seat, orderpicker		Seat	Seat	Seat
	1.5	Load capacity	Q (kg)	4000	4500	5000
	1.6	Load centre	c (mm)	500	500	500
	1.8	Load distance	x (mm)	575	575	580
	1.9	Wheelbase	y (mm)	2100	2100	2100
Weights	2.1	Unladen weight	kg	6230	6500	7010
	2.2	Axle loading, laden front / rear	kg	9014 / 1216	9766 / 1234	10900 / 1200
	2.3	Axle loading without load, front	kg	2978 / 3252	2837 / 3663	3160 / 3850
Tyres/ chassis	3.1	Tyres: P = pneumatic, V = cushion, SE = superelastic		P	P	P
	3.2	Tyre size, front		300-15-21PR	300-15-18PR	300-15-18PR
	3.3	Tyre size, rear		7.00-12-15PR	7.00-12-12PR	7.00-12-12PR
	3.5	Number of wheels, front/rear (X = driven)		2 X 2	2 X 2	2 X 2
	3.6	Track width, front	b10 (mm)	1190	1190	1190
	3.7	Track width, rear	b11 (mm)	1130	1130	1130
Dimensions	4.1	Mast tilt, forward α / back β	α / β (°)	6 / 12	6 / 12	6 / 12
	4.2	Height of mast, lowered	h1 (mm)	2250	2250	2250
	4.3	Free lift	h2 (mm)	150	150	155
	4.4	Lift height	h3 (mm)	3000	3000	3000
	4.5	Height of mast, extended	h4 (mm)	4260	4260	4260
	4.7	Height to top of overhead guard	h6 (mm)	2250 (2400)	2250 (2400)	2250 (2400)
	4.8	Seat height	h7 (mm)	1350	1350	1350
	4.12	Towing coupling height	h10 (mm)	340	340	340
	4.19	Overall length	l1 (mm)	4280	4280	4345
	4.20	Length to face of forks	l2 (mm)	3210	3210	3275
	4.21	Overall width, Standard / Dual	b1 (mm)	1490	1490	1490
	4.22	Fork dimensions ISO2331	s/e/l (mm)	50 / 150 / 1070	50 / 150 / 1070	55 / 150 / 1070
	4.23	Fork carriage to DIN 15173. Class, A/B		ISO 3A	ISO 3A	ISO 3A
	4.24	Fork carriage width	b3 (mm)	1380	1380	1380
	4.31	Ground clearance under mast, with load	m1 (mm)	155 / 130	155 / 130	155 / 130
	4.32	Ground clearance at centre of wheelbase	m2 (mm)	186	186	186
	4.33	Load dimension b12 x l6 crossways	b12 x l6 (mm)	1000 x 1000	1000 x 1000	1000 x 1000
	4.34	Aisle width with predetermined load dimensions	Ast (mm)	4625	4625	4685
	4.34.1	Aisle width with pallets 1000mm x 1200mm crossways	Ast (mm)	4625	4625	4685
	4.34.2	Aisle width with pallets 800mm x 1200mm crossways	Ast (mm)	4425	4425	4485
	4.35	Outer turning radius	Wa (mm)	2850	2850	2905
	4.36	Inner turning radius	b13 (mm)	100	100	100
	4.42	Step height (from ground to running board)	mm	885	885	885
	4.43	Step height (between intermediate steps and floor)	mm	520	520	520
Performance Data	5.1	Travel speed laden/unladen - Shift 2	km/h	24 / 25	24 / 25	25 / 27
	5.1	Travel speed laden/unladen - Shift 1	km/h	17 / 18	17 / 18	17 / 18
	5.1.1	Travel speed, laden / unladen, backwards - Shift 2	km/h	-	-	-
	5.1.1	Travel speed, laden / unladen, backwards - Shift 1	km/h	19 / 20	19 / 20	19 / 20
	5.2	Lifting speed laden/unladen	m/s	530 / 560	530 / 560	530 / 560
	5.3	Lowering speed laden/unladen	m/s	480 / 500	480 / 500	480 / 500
	5.6	Maximum drawbar pull laden/unladen	N	30 / 23	30 / 23	30 / 23
	5.6.1	Drawbar pull laden/unladen, @ 1.6km/h	N	25 / 22	25 / 22	25 / 22
	5.6.2	Drawbar pull laden/unladen, @ 4.8km/h	N	19 / 16.5	19 / 16.5	19 / 16.5
	5.7	Gradeability laden/unladen, @ 1.6km/h	%	24 / 25	22 / 25	20 / 25
Combustion Engine	5.9	Acceleration time with/without load (S) 15m	s	5.05(S1) / 4.76(S2)	5.21(S1) / 4.86(S2)	5.41(S1) / 5.06(S2)
	5.9	Acceleration time with/without load (S) 15m	s	4.15(S1) / 3.95(S2)	4.32(S1) / 4.15(S2)	4.52(S1) / 4.35(S2)
	5.10	Service brake		hydraulic	hydraulic	hydraulic
	7.1	Engine manufacturer/type		Mitsubishi S6S	Mitsubishi S6S	Mitsubishi S6S
	7.2	Engine output, in accordance with ISO1585	kW	52	52	52
	7.3	Governed speed	min-1	2300	2300	2300
	7.4	Number of cylinders/displacement	(-) / (cm ³)	6 / 4966	6 / 4966	6 / 4966
	7.5	Fuel consumption in accordance with VDI cycle	ℓ/h or kg/h	5.9	6.1	6.4
	7.6	Turnover output	t/h	270t/h	300t/h	345t/h
	7.7	Energy consumption at turnover output	ℓ/h or kg/h	7.77kg/h	8.07kg/h	8.37kg/h
Additional Data	8.1	Type of drive unit		E-Hydraulic	E-Hydraulic	E-Hydraulic
	10.1	Operating pressure for attachments	bar	19.5	19.5	19.5
	10.2	Oil volume for attachments	ℓ/min	70	70	70
	10.3	Hydraulic oil tank, capacity	ℓ	108	108	108
	10.4	Fule tank, capacity	ℓ	100	100	100
	10.7	Average noise level at operator's ear EN 12053	dB (A)	88	88	88
	10.7.1	Sound power level during the workcycle	dB (A)	109.6	109.6	109.6
	10.8	Towing coupling, type DIN 15170		Pin	Pin	Pin

Services and Spares

Now, leave your forklift maintenance worries to Cranedge!



About Cranedge

Cranedge is an exclusive Services Partner of ElectroMech Yale that provides after-sales service support and supply spares for all types and models of forklifts and lift trucks.

Cranedge is a leading company dedicated to providing after-sales support for various types of material handling equipment such as overhead cranes, forklifts, lift trucks, aerial work platforms and tower cranes.

- A subsidiary company of ElectroMech
- More than 12 years in the industry
- Supporting over 3000 forklifts in India
- PAN India network of over 200 trained technicians
- Uses smart technology (CMMS) for efficient services

What it means for you

- Single point contact for all types and models of Yale® forklifts
- Support for spares and services
- Services from expert and trained technicians
- Genuine spares – like those in the original truck
- Reliable and efficient support
- Low downtime, low maintenance costs

**Complaint
resolution**



**Expert
support**



To know how Cranedge can undertake the upkeep of your fleet of forklifts, call now!

Toll-free 1800 209 0010
enquiry@cranedge.com
www.cranedge.com



Easy maintenance, like never before!

Smart Kit from Cranedge for your Yale Diesel Lift Truck.

Why is the periodic maintenance of your diesel lift truck so important?

Simply because, if you carry out the periodic maintenance, you will benefit in several ways, such as

- Longer overhauling/maintenance intervals
- Lower brake oil consumption
- Higher fuel efficiency (more mileage)
- Better performance as no overheating of engine
- Internal seals of the cylinder and the hydraulic pumps will last longer
- Reduced overall maintenance cost
- Enhanced life of your lift truck
- Reduced number of breakdowns
- Assured lift truck safety

To get your Smart Kit, contact Cranedge.

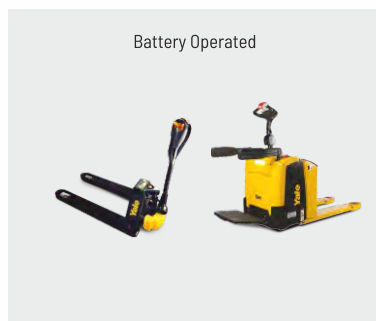
Complete spares
required for the
periodic maintenance
of your diesel lift truck
for 2000-hours of
operation.

Complete in
one box



Lift Trucks & Warehousing Solutions

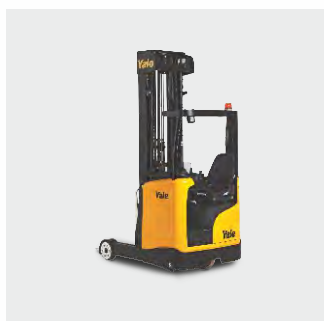
Pallet Trucks



Electric Stackers



Reach Trucks



Tow Trucks



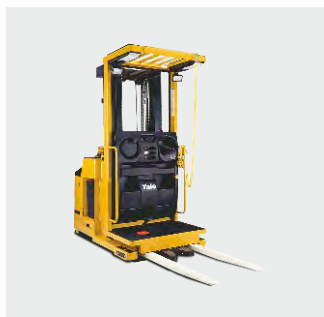
Electric Forklifts



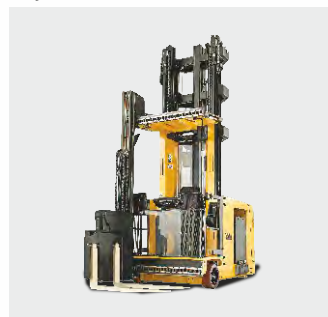
Diesel Forklifts



Order Pickers



Very Narrow Aisle Trucks



For enquiries, contact:



ElectroMech **Yale**

Corporate Office & Plant

**ElectroMech Material Handling
Systems (India) Pvt. Ltd.**

Gat No. 316, At post Kasar Amboli,
Tal. Mulshi, Dist. Pune 412 115 INDIA

Telefax : +91-20-6654 2222

E-mail : yale@emech.in

Yale Asia Pacific

Address: 1 Bullecourt Ave, Milperra NSW 2214, Australia
www.yale.com

Yale is a registered trademark. *People. Products. Productivity.* is a trademark in the United States and certain other jurisdictions.  is a registered copyright of Yale Materials Handling Corporation.

© Yale Asia Pacific 2013. All rights reserved.

Specifications and details in this brochure are subject to change without prior notification.



www.emechyale.in